

Over 145 Years of Service

ESTABLISHED 1878

**THE GEORGE J. FALTER CO.**


Wholesalers

georgejfalter.com 410-644-6414

Oldest Candy Distributor in Maryland

**Bonus Buy**

Look For Our "Bonus Buys" In This Red Circle!



Check Out Our Website:  
[www.georgejfalter.com](http://www.georgejfalter.com)

PRICES GOOD 6/28 - 7/31/2026

*Al Capone*

**LARGE CIGAR PREMIUM HAND ROLLED SINGLES**  
1287

**1.00 OFF**



**10/10 PACKS**

- 5615 Blues
- 1138 Sweets
- 6154 Jamaican Blaze
- 7188 NEW! Gold

**10/10 PACKS**

- 5620 Blues Filter
- 1141 Jamaican Blaze Filter
- 1142 Sweet Filter
- 7189 NEW! Gold Filter

**2.00 OFF**



FLAVORED TOBACCO ITEMS NOT AVAILABLE IN D.C.

- 60/2 PK. TOWER**
- 1144 Sweets
  - 6156 Jamaican Blaze
  - 7190 NEW! Gold
- 60/2 PK. JARS**
- 1270 Sweets
  - 6155 Jamaican Blaze
- 60/2 PK. TOWER**
- 1146 Jamaican Blaze Filter
  - 1123 Sweet Filter
  - 7192 NEW! Gold Filter
- 60/2 PK. JARS**
- 1273 Jamaican Blaze Filter
  - 1272 Sweet Filter

**3.00 OFF**

- BLUES**
- 60/2 PK. TOWER**
- 8334 Blues
- 60/2 PK. TOWER**
- 8336 Blues Filter

**HERSHEY'S**

**JOLLY RANCHER**



**PEG BAGS**

- 70177 Chewy Poppers
- 702622 Gummies
- 55710 Gummies Sour
- 60653 Gummies Heat Wave
- 55730 Ropes Blue Raspberry/Cherry
- 55729 Ropes Watermelon/Apple

**2.19 EACH**

**3.95 SRP**

**SHAQ**

**PEG BAGS**



- 70365 Gummies Original
- 60595 Gummies Slams
- 70381 Gummies Sneakers
- 70366 Gummies Sour


**2.19 EACH**

**3.95 SRP**

**HERSHEY'S**

**KING SIZE**

**12 CT.**



- 530148 Cherry Nibs
- 85965 Jolly Rancher Gummies
- 85961 JR Gummies Sour

**26.49 BOX**

**3.65 SRP**

3501 Benson Avenue • Baltimore, MD 21227 • (410) 644-6414

After Hour Answering Service • FAX (410) 646-3745 • 1 (800) 322-3491 (in Maryland) • [www.georgejfalter.com](http://www.georgejfalter.com)

# Candy

**ON-LINE ORDERING**  
Now Available!  
Call Customer Service for Details!

## SOUR PUNCH

**5 OZ. PEG BAGS**

- 87344 Assorted
- 87306 Blue Raspberry
- 87080 Rad Reds
- 87370 Strawberry
- 18004 Sweet Bites
- 87388 Tropical

**2.09 SRP**



**1.23 EACH**

## Twizzlers

**33.09 BOX**

**KING SIZE 15 CT.**

53103 Strawberry Twists

53107 Cherry Pull & Peel



**3.65 SRP**

## Reese's PIECES KING SIZE

**39.69 BOX**

**18 CT.**

20111

**3.65 SRP**



## SOUR PUNCH

### STRAWS

**24 CT.**

- 33056 Blue Raspberry
- 33058 Grape
- 33054 Rainbow
- 33051 Strawberry
- 33055 Watermelon

**1.59 SRP**



**26.49 BOX**

## Kinder bueno

**STANDARD**

**20 CT. 787776**

**1.95 SRP**

**22.59 BOX**



## Kinder bueno

**SHARE SIZE**

**8 CT. 787775**

**3.35 SRP**

**15.39 BOX**



## SOUR PUNCH

### TWISTS

**210 CT. 81151**



**8.99 TUB**

**.09 SRP**



## Kinder

**CHOCOLATE**

**STANDARD 18 CT.**

766285 **1.95 SRP**

**20.39 BOX**



## SOUR PUNCH

### STRAWS

**5 OZ. PEG BAG**

- 791317 Blue Raspberry Lemonade
- 791320 Cherry Limeade

**3.15 SRP**

**1.89 EACH**



## Kinder

**CHOCOLATE**

**SHARE SIZE 16 CT.**

766286 **3.35 SRP**

**30.79 BOX**



# Candy



**TREAT + TOY**  
**Kinder Joy**  
 15 CT.  
 665259  
**2.75 SRP**  
**24<sup>49</sup> BOX**



**m&m's**  
 CHOCOLATE CANDIES  
**5 OZ. PEG BAGS**  
 34787 Milk Chocolate  
 34788 Peanut  
 17445 Peanut Butter  
**4.15 SRP**

**2<sup>19</sup> EACH**



**Skittles**  
**36 CT.**  
 34917 Original  
 34915 Tropical  
 34914 Wild Berry  
**2.19 SRP**

**41<sup>59</sup> BOX**



**Skittles**  
**24 CT.**  
 34916 Sour  
 29795 Sour Wild Berry  
**2.19 SRP**

**27<sup>79</sup> BOX**



**WRIGLEY**  
 A Subsidiary of Mars, Incorporated

**WRIGLEY'S "5" MEGA PACK**  
**6 CT.** 27613 Cobalt 27614 Rain  
**6.45 SRP**

**21<sup>99</sup> BOX**



**GUMBALLS**  
**36 CT.**  
 15269 Dubble Bubble  
 90671 Cry Baby  
 5830 Cotton Candy  
**.39 SRP**

**7<sup>99</sup> BOX**




**Tootsie**  
**FROOTIES**  
**360 CT. BAG**

7824 Apple  
 7830 Blue Raspberry  
 7915 Grape  
 7857 Mango  
 7860 Pineapple  
 7935 Punch  
 7858 Sour Cherry  
 7955 Strawberry  
 7852 Strawberry Lemonade  
 7899 Watermelon

**.05 SRP**

**7<sup>54</sup> BAG**



**Mike and Ike**  
**THEATRE SIZE**  
**12 CT.**

49534 Berry  
 42309 Hot Tamales  
 49538 Jolly Joes  
 49356 Mega  
 49360 Mega Sour  
 42312 Original  
 49539 Red Rageous  
 49560 Sour Blue Raspberry  
 49134 Tropical  
 495403 Watermelon

**1.85 SRP**

**15<sup>31</sup> BOX**





# Snacks

**ON-LINE ORDERING**  
Now Available!  
Call Customer Service  
for Details!

**Reese's**  
**20<sup>99</sup>**  
BOX

**FILLED PRETZELS**  
12 CT. 5 OZ.  
48026  
**3.25 SRP**



**BEER NUTS**  
BRAND SNACKS  
**20<sup>99</sup>**  
BOX



**BAR MIX**  
12 CT. 3.25 OZ.  
32648 Hot  
30648 Original  
**2.95 SRP**

**Reese's**  
**DIPPED ANIMAL CRACKERS**  
12 CT. 21753

**28<sup>39</sup>**  
BOX

**4.25 SRP**

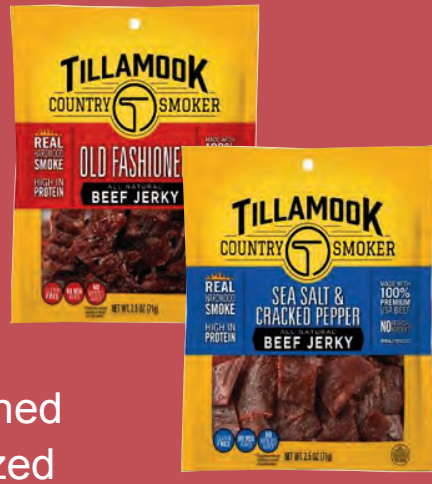


**BEER NUTS**  
BRAND SNACKS  
**12<sup>49</sup>**  
BOX

**BOTTLE BAG**  
12 CT.  
1.75 OZ. BAGS  
40214  
**1.85 SRP**



**BEEF JERKY**  
12 CT. 2.5 OZ.  
772874 Old Fashioned  
772876 Honey Glazed  
772877 Salt & Pepper  
772875 Teriyaki  
**7.65 SRP**



**54<sup>79</sup>**  
BOX

**BEER NUTS**  
BRAND SNACKS  
**21<sup>79</sup>**  
BOX

**CASHEWS**  
12 CT.  
2 OZ. BAGS  
40215  
**2.99 SRP**



**BEER NUTS**  
BRAND SNACKS  
**12<sup>29</sup>**  
BOX



**3 OZ. BAG**  
12 CT.  
40212  
**1.79 SRP**

**NEW! TWIGZ**

**PRETZELS**  
6 CT. 4 OZ.  
812398 Cheddar Ranch  
812396 Dill Pickle  
812399 Herb Garlic  
812397 Sour Cream & Onion  
**3.99 SRP**

**13<sup>99</sup>**  
BOX



**BEER NUTS**  
BRAND SNACKS  
**20<sup>49</sup>**  
BOX

**VALUE BAG**  
12 CT.  
5.5 OZ. BAGS  
40213  
**2.95 SRP**



**Pecan NATION**  
**19<sup>49</sup>**  
BOX

**8/2.25 OZ.**  
793863 Cinnamon  
793865 Honey Roasted  
793862 Salted  
**4.09 SRP**





# Candy

Wonderful™  
**PISTACHIOS**

**22<sup>69</sup>**  
BOX

**8 CT. IN SHELL**

910156 Original 5 Oz.  
910158 Salt & Pepper 4.5 Oz.

**5.39 SRP**



**Rips** **4 OZ. PEG**

789604 Blue Raspberry  
644250 Rainbow  
605395 Strawberry Apple

**2.79 SRP**

**1<sup>90</sup>**  
EACH

Wonderful™  
**PISTACHIOS**

**SHELLED**  
**8 CT.**  
**2.25 OZ.**

792237 Dill Pickle  
775356 Jalapeno Lime  
703040 Sweet Chili  
703039 Honey Roasted  
768072 Salt & Pepper  
727701 Salt & Vinegar  
665707 Salted

**5.09 SRP**

**21<sup>99</sup>**  
BOX



**RIP ROLLS**  
**24 CT.**

605404 Blue Raspberry  
644251 Strawberry

**1.89 SRP**

**27<sup>30</sup>**  
BOX



**SOUR JACKS**  
MOUTH-PUCKERING CANDY

**1<sup>35</sup>**  
EACH  
**5 OZ. PEG**

12524 Blue Raspberry  
12521 Original  
12529 Wild Berry  
12523 Watermelon

**2.45 SRP**



**ANGEL MINTS**

**110 CT.**  
11200  
**.25 SRP**

**18<sup>66</sup>**  
BOX



**PURE PROTEIN AMMMAZE**  
**STRAWBERRY SHORT CAKE**

**12 CT.**  
17500  
**3.25 SRP**

**24<sup>39</sup>**  
BOX



**NOW and LATER**

**CHANGEMAKERS**  
**24 CT.**

521088 Apple  
521071 Banana  
52104 Blue Raspberry  
521033 Cherry  
521101 Grape  
521064 Pineapple  
51897 Soft Banana  
521026 Strawberry  
52015 Tropical Punch  
521002 Watermelon

**.45 SRP**



**7<sup>93</sup>**  
BOX

**POP ROCKS** **STRAWBERRY**  
**24 CT.** 51610  
**1.09 SRP**

**16<sup>19</sup>**  
BOX





# Snacks

**ON-LINE ORDERING**  
Now Available!  
Call Customer Service  
for Details!

## CHUCKANUT BAY

### MINI CHEESECAKES

**6 CT. 3.5 OZ.**  
781375 Strawberry  
781376 New York Original  
781371 Chocolate Truffle  
**3.69 SRP**

**11<sup>49</sup>**  
BOX



**Bonus Buy**



## Chex mix

**7 CT. 4.5 OZ.**  
813079 Indulgent w/M&M's  
**3.49 SRP**

**16<sup>49</sup>**  
BOX

**NEW!**



**8 CT. 4.5 OZ.**

786309 Bold Party Blend  
786305 Cheddar  
786308 Honey BBQ  
786307 Spicy Jalapeno Cheddar  
786306 Traditional  
786304 White Cheddar  
792600 Hot & Spicy  
792599 Spicy Dill  
**3.99 SRP**



**16<sup>49</sup>**  
BOX



**6 CT.**  
880013 Filled Chocolate Cupcakes  
**2.29 SRP**

**7<sup>59</sup>**  
BOX



**8 CT.**  
880052 Raspberry Dreamies  
399330 Iced Carrot Cake  
658053 Brownie Oreo  
**2.29 SRP**

**10<sup>59</sup>**  
BOX



**12 CT.**  
418003 Pecan Twirls  
**2.29 SRP**

**15<sup>99</sup>**  
BOX



## Gushers

**8 CT. 4.25 OZ.**

808646 Blueberry/Grape  
Sour Blue Raspberry  
4787547 Watermelon & Sour Apple  
681077 Super Sour  
650555 Flavor Mixer  
751003 Tropical  
**3.25 SRP**



**NEW!**

**14<sup>49</sup>**  
BOX



## Jimmy's FAMOUS SEAFOOD POTATO CHIPS

**24 CT. 1.5 OZ.**  
12751 Crab Dip  
12752 Boardwalk  
12753 Luke's Blend Crab (Korean BBQ Crab)  
**2.39 SRP**

**1<sup>67</sup>**  
EACH





**6 CT. 4 OZ.**

- 22160 Cheese Danish
- 27641 Cherry Cheese Claw
- 687877 Blueberry Claw
- 45599 Chocolate Iced Bun Jumbo
- 45586 Glazed Honey Bun Jumbo
- 45516 Iced Honey Bun Jumbo
- 268350 Big Texas Cinnamon Roll

**1.69 SRP**



**5<sup>49</sup>  
BOX**



**9 CT. STAND UP CADDY**

- 736032 Captain's Wafer Cream Cheese & Chives
- 766651 Captain's Wafer Grilled Cheese
- 588760 Toasty Peanut Butter
- 588761 ToastChee Peanut Butter

**1.29 SRP**



**4<sup>49</sup>  
BOX**



**VAN HOLTEN'S**

**PICKLES JUMBO SIZE #6 12 CT.**

- 42949 Blue Raspberry
- 42957 Warheads
- 42963 Dill
- 42967 Hot
- 42966 Kosher
- 42968 Sour

**1.89 SRP**

**8<sup>99</sup>  
BOX**



**RXBAR**

**PROTEIN BAR 12 CT. 1.83 OZ.**

- 753169 Honey Cinnamon PB
- 691513 Blueberry
- 691516 Chocolate Sea Salt
- 768833 Peanut Butter Dark Choc.

**3.09 SRP**



**1<sup>99</sup>  
BOX**

**VAN HOLTEN'S**

**PICKLES KING SIZE #10 12 CT.**

- 42982 Hot
- 42983 Sour
- 42987 Kosher
- 42988 Dill

**1.99 SRP**

**9<sup>99</sup>  
BOX**



**Kisko**



**GIANT FREEZE POPS**

**27 CT. 5.5 OZ. 18868 .69 SRP**

**4<sup>69</sup>  
BOX**



# Grocery

**ON-LINE ORDERING**  
Now Available!  
Call Customer Service for Details!

**Essential EVERYDAY**

**1.49 EACH**

**MUSTARD**  
14 OZ.  
SQUEEZE BOTTLE

101871  
**2.29 SRP**



**vlasic**  
since 1942

**PICKLE SPEARS**  
16 OZ. 105520

**4.19 SRP**

**2.59 EACH**



**Essential EVERYDAY**

**3.09 EACH**

**SUGAR**  
4 LB.

121720  
**6.35 SRP**



**Kraft**

**BBQ SAUCE**  
18 OZ.

1026160 Original  
105923 Honey

**3.89 SRP**

**2.49 EACH**



**MORTON SALT**

**SALT & PEPPER SHAKER SET**

10650235

**3.59 SRP**

**2.39 EACH**



**Essential EVERYDAY** **NEW!**

**CHARCOAL BRIQUETS**  
INSTANT LIGHT

6/6.2 LB. 4850833

**42.99 6 CT**



**JIF**

**PEANUT BUTTER**  
16 OZ.

145270 Creamy  
145250 Crunchy

**4.29 SRP**

**2.69 EACH**



**HEINZ**

**SQUEEZE KETCHUP**  
14 OZ.

102008

**4.09 SRP**

**2.69 EACH**



**OLDELPASO**

**TACO DINNER KIT**  
8.8 OZ.

554116

Hard & Soft Shell

**5.59 SRP**

**3.69 EACH**



**HEINZ**

**VINEGAR WHITE**  
16 OZ.

10420332

**2.19 SRP**

**1.49 EACH**



**French's**

**WORCESTERSHIRE**  
10 OZ.

365187

**3.39 SRP**

**2.24 EACH**



**BUSH'S BEST**

**BAKED BEANS**  
16 OZ.

120430

**2.99 SRP**

**2.09 EACH**



**SHAKE 'n BAKE**

**5.5 OZ.**  
10520355

Original Chicken

**5.39 SRP**

**3.76 EACH**



**BEN'S**

**BROWN RICE**  
1 LB. BOX

4585301

**3.19 SRP**

**2.29 EACH**



**OLD BAY**

**SEASONING**  
6 OZ.

10641443

**6.59 SRP**

**3.97 EACH**



**GREEN GIANT**

**WHOLE KERNEL CORN**  
15 OZ.

45455

**2.39 SRP**

**2.29 EACH**



# Refrigerated



**Essential EVERYDAY**  
**BUTTER SALTED QUARTERS**  
 16 OZ. 600644

**2<sup>99</sup> EACH**

**5.09 SRP**

**Banquet**  
 MADE IN THE USA SINCE 1953

**BROWN & SERVE SAUSAGE**

572552 **3.39 SRP**

**2<sup>19</sup> EACH**

**Essential EVERYDAY**

**SWISS CHEESE**  
 8 OZ. SLICED

605460 **4.49 SRP**

**2<sup>99</sup> EACH**

**Kraft**

**AMERICAN SINGLES**  
 12 OZ. 16 CT.

1605189 **6.19 SRP**

**4<sup>49</sup> EACH**

**Essential EVERYDAY**

**MOZZARELLA SHREDDED CHEESE**  
 8 OZ. 133252

**4.79 SRP**

**2<sup>89</sup> EACH**

**Oscar Mayer**

**BACON**  
 8 OZ. 373159

**6.25 SRP**

**4<sup>29</sup> EACH**

# Frozen

**FRIDAYS**

**9-10 OZ.**

765238 Chicken Bites  
 751686 Boneless Buffalo Style Potato Skins  
 765236 Cheddar & Bacon Wings Honey BBQ  
 765237 Wings w/ Buffalo Sauce

**6.89 SRP**

**4<sup>59</sup> EACH**

**Mrs. Freshley's**  
 Make life sweeter!

**ROLLS**  
 8 CT. 12 OZ.  
 575619 Hamburger Buns  
 575611 Hot Dog Buns

**BREAD**  
 8 CT. 20 OZ.  
 475936 Wheat  
 475937 White

\*\*\*These Items Come Frozen and Un-Dated. Shelf Life is 60 Days Once Thawed. Retailer is Responsible for Dating

**17<sup>59</sup> BOX**

**3.39 SRP**

**SWANSON 16 OZ.**

**HUNGRY-MAN DINNERS**

1765231 Meatloaf Dinner  
 7136785 Salisbury Steak Dinner  
 1765230 Turkey Dinner  
 525583 Boneless Fried Chicken Dinner

**3<sup>99</sup> EACH**

**5.69 SRP**

**4<sup>59</sup> EACH**

**16 OZ.**

1765222 Classic Fried Chicken Dinner

**6.49 SRP**



Over 100 Years of Candy  
**GEORGE J. FALTER**  
 918-664-6654  
**ON-LINE ORDERING**  
 Now Available!  
 Call Customer Service  
 for Details!

**STORCK**  
**TOP 10 CUSTOMERS WIN**  
**\$100 FALTER BUCKS**

**RETAILER CONTEST!**

**Werther's Original**

**ROLL**  
 30155

**PEG BAGS**  
 35438 Original  
 37210 Soft

**Mamba**

**COUNT GOODS 24 CT.**  
 53180 Tropics  
 22510 Berrytasty  
 22410 Sour  
 22310 Original

**7 OZ. PEG BAGS**  
 56372 Original  
 11743 Tropics  
 57843 Fruit Strips  
 57874 Magic Sticks

**CHANGEMAKERS**  
 30143 Original  
 53210 Tropics

**Welch's**  
 FAMILY FARMER OWNED

**FRUIT SNACKS 12 CT.**  
 105091 Island Fruit  
 105092 Berries  
 105096 Strawberry  
 105098 Mixed Fruit  
**2.65 SRP**

**FRUIT 'n YOGURT 12 CT.**  
 122804 Blueberry  
 122866 Strawberry  
**2.89 SRP**

**Welch's**  
 FAMILY FARMER OWNED

**JUICEFULS 12 CT.**  
 41251 Mixed Fruit  
 41252 Island Splash  
 41253 Berry Blast  
 41283 Fusions Citrus  
 41281 Fusions Tropical  
**2.65 SRP**



ON-LINE ORDERING  
Now Available!  
Call Customer Service for Details!

**RETAILER CONTEST!**

**July - September 2026**  
**1st PLACE: \$500 Falter Bucks**  
**2nd PLACE: \$350 Falter Bucks**  
**3rd PLACE: \$250 Falter Bucks**  
**4th-12th PLACES: \$100 Falter Bucks**  
 Choose from the Following to Qualify...

**BUBBLICIOUS**

- 17504 Original
- 784646 Watermelon



**DENTYNE FIRE**

784578



**DENTYNE ICE**

- 784577 Arctic Chill
- 784575 Peppermint
- 784576 Spearmint
- 784589 Winter Chill



**TRIDENT POCKET PACK**

- 784636 Cinnamon
- 784629 Original
- 784627 Spearmint
- 784626 Tropical



**TRIDENT VAK-U-PAK**

- 784602 Bubblegum
- 784600 Cinnamon
- 784606 Island Berrylime
- 784604 Mint Bliss
- 784605 Minty Sweet
- 784597 Original
- 784603 Peppermint
- 784607 Pineapple
- 784598 Spearmint
- 784599 Tropical
- 784608 Wintergreen
- 784601 Watermelon

**TRIDENT VIBES CLUTCH**

- 803578 Blue Raspberry
- 803576 Spearmint Rush



**TRIDENT VIBES BOTTLE**

- 784631 Blue Raspberry
- 794056 Cotton Candy
- 803575 Peppermint Rush
- 784630 Red Berry
- 784618 Spearmint
- 784635 Watermelon



**TRIDENT WHITE**

- 784579 Peppermint
- 784580 Spearmint
- 784582 Wintergreen



**FALTER BUCKS WILL APPEAR ON YOUR ACCOUNT AS A CREDIT!**



**ON-LINE ORDERING**  
Now Available!  
Call Customer Service  
for Details!



**A GREAT PROFIT MAKER!**

# Slushy Program

**TAKE ADVANTAGE OF TIER PRICING AND STOCK UP!!**

**TIERED PRICING**  
6 - 1/2 GALLON CASE

**SINGLE CASE PRICE**  
**\$70<sup>58</sup>**  
PER CASE

**5 CASE PRICE**  
**\$64<sup>69</sup>**  
PER CASE

**10 CASE PRICE**  
**\$58<sup>81</sup>**  
PER CASE

**15 CASE PRICE**  
**\$56<sup>81</sup>**  
PER CASE

**OUR PROGRAM INCLUDES:**  
Cup & dome Lid Holder w/Straw Attachment,  
Mixing Jugs w/Lid, Flavor Stickers and...



## Free Slush Mix!

### Slush Mix Flavors (All 6 - 1/2 Gallon)

- #172735 Blue Raspberry
- #171535 Cherry
- #170735 Cotton Candy
- #171335 Grape
- #176635 Kiwi Strawberry
- #171435 Lemonade
- #176535 Mango
- #171135 Orange
- #171536 Pina Colada
- #171635 Strawberry
- #171538 Sour Green Apple
- #171537 Watermelon



**We Are Fully Stocked  
with Equipment  
& Supplies!**

**Contact  
Your  
GJF  
Sales  
Rep  
Today  
for  
More  
Info!**



# Food Service

**ON-LINE ORDERING**  
Now Available!  
Call Customer Service  
for Details!



**Bellarico PIZZA**

**PIZZA PROGRAM**

**GO FOR A BETTER SLICE.**  
At your place. On your terms.

**12" SELF-RISING CRUST  
12 CT.**

518901 Breakfast    518899 Pepperoni

**7" SINGLE SERVE    24 CT.**

568676 Breakfast  
535072 Pepperoni  
774459 Sausage  
535073 Supreme

**SEE YOUR  
FALTER  
SALES REP FOR  
MORE DETAILS**

**EQUIPMENT**  
**WISCO DELUXE PIZZA  
MULTI-PURPOSE OVENS**

**MODEL 421**

18"W x 15" D x 7<sup>3</sup>/<sub>4</sub>" H



**MODEL 621**

19"W x 18" D x 14<sup>1</sup>/<sub>4</sub>" H

**MODEL 561A**

23<sup>5</sup>/<sub>8</sub>" W x 19<sup>1</sup>/<sub>2</sub>" D x 10<sup>1</sup>/<sub>4</sub>" H



**WISCO  
WARMING  
MERCHANDISING  
CABINET**

**MODEL 690-25**

18"W x 18" D x 34" H



**GRILL • MICROWAVE  
BAKE • FRY**

**FLAMED GRILLED  
PUB STYLE  
STEAK BURGER**

**53/3 OZ. CASE**

377916 FULLY COOKED

**101<sup>99</sup>  
CASE**




**TORNADOS** Work hard.  
**EAT BOLD.**

**24 CT.    3 OZ.**

- 790473 Bacon Cheddar Loaded Potato Skin
- 446426 Southwest Chicken
- 446428 Sausage, Egg & Cheese
- 446429 Ranchero Beef Steak
- 447544 Cheesy Pepper Jack
- 446431 Egg, Bacon, Cheese & Salsa
- 449158 Pepperoni & Cheese
- 773527 Spicy Queso Beef

**1.69 SRP**

**21<sup>99</sup>  
BOX**



**CHICKEN**  
**No Boxes or Foil Bags**  
**10 LB. CASE**  
**2/5 LB. BAGS**



- 520419 Golden Crisp 4 Oz. Chicken Breast Filet
- 520446 Spicy Chicken Breast Tenders
- 520445 Chicken Tenders



# July Focus Items



## CHATTANOOGA

- 557780 Moon Pies Double Decker Chocolate 9/Bx
- 557782 Moon Pies Double Decker Banana 9/Bx
- 557781 Moon Pies Double Decker Vanilla 9/Bx



## STORCK

- 22510 Mamba Chews Berrytasty 24/Bx
- 22310 Mamba Chews Fruit 24/Bx
- 22410 Mamba Chews Sour Fruit 24/Bx
- 53180 Mamba Chews Tropics 24/Bx



## BAZOOKA

- 20595 Baby Bottle Pop 18/Bx
- 26003 Ring Pop Fruit Fest Original 24/Bx
- 29278 Push Pop Fruit Original 24/Bx
- 724921 Juicy Drop Dip'n Stix 8/Bx



## JUST BORN

- 24830 Peanut Chew Original Standard Bar 24/Bx
- 24808 Peanut Chew Milk Chocolatey Standard Bar 24/Bx
- 24810 Peanut Chew Original Dark King Size 18/Bx



## HERSHEY

- 72335 Ice Breakers Duo Mint Strawberry 8/Bx
- 72336 Ice Breakers Duo Mint Raspberry 8/Bx
- 72389 Ice Breakers Duo Mint Watermelon 8/Bx
- 72507 Ice Breakers Raspberry/Lemon Mints 8/Bx



## HEARTLAND

- 387702 Splenda Sugar Substitute 2000/Bx
- 472678 Splenda Sugar Substitute 50/Bx



## KETTLE CHIPS

- 500772 Backyard Barbeque 2 Oz. 6/Bx
- 609918 Dill Pickle 2 Oz. 6/Bx
- 500771 Jalapeno 2 Oz. 6/Bx
- 500754 Salt & Pepper 2 Oz. 6/Bx
- 500752 Sea Salt 2 Oz. 6/Bx
- 500753 Sea Salt & Vinegar 2 Oz. 6/Bx



# Health & Beauty



## CALAMINE LOTION

6 OZ. 14787 **3.89 SRP**

**2<sup>72</sup>**  
EACH

## COLGATE TOOTHPASTE

1 OZ. 59510  
**1.09 SRP**

**.73**  
EACH



## DEEP WOODS

6 OZ.

**5<sup>42</sup>**  
EACH

138528  
**7.39 SRP**



## VASELINE PETROLEUM JELLY

6 CT. 1.75 OZ.  
63020 **2.69 SRP**

**11<sup>36</sup>**  
6 CT



## DRAMAMINE VIAL

12 TABLETS

313320 **8.45 SRP**

**5<sup>79</sup>**  
EACH



## SECRET SHOWER FRESH

6 CT. 1.7 OZ.

61151 **3.29 SRP**

**13<sup>49</sup>**  
6 PK



## BULK EXCEDRIN

25 CT.

18680 **1.19 SRP**

**12<sup>47</sup>**  
BOX



## CORTIZONE 10 CREME

1 OZ.

153864  
**8.79 SRP**

**6<sup>05</sup>**  
EACH



## BULK TYLENOL EXTRA STRENGTH

50 CT.

20024 **.79 SRP**

**16<sup>58</sup>**  
BOX



## ASSORTED DISPLAY

28 CT. 200664 **2.39 SRP**

**47<sup>64</sup>**  
DISPLAY CARD



## RAZOR & GILLETTE SHAVE CREAM

29069 **4.45 SRP**



**3<sup>05</sup>**  
EACH

## JERGENS ULTRA HEALING LOTION

3 OZ. 60865 **3.59 SRP**

**2<sup>76</sup>**  
EACH





# General Merchandise



**ON-LINE ORDERING**  
Now Available!  
Call Customer Service  
for Details!



## CHARCOAL

6/5 LB. 46568 **6.26 SRP**

**22<sup>76</sup>**  
BALE

5/10 LB. 46569 **10.82 SRP**

**32<sup>77</sup>**  
BALE

## BRIQUETS

1/20 LB. 376940 **17.53 SRP**

**10<sup>62</sup>**  
EACH

## LUMP

1/20 LB. 46566 **31.18 SRP**

**18<sup>89</sup>**  
EACH

The warm weather is here...

## FOAM COOLERS

Make Sure You Are Stocked Up  
To Take Care of Your Customers' Needs!

**14 QUART**  
**12 CT. CASE**  
46580  
**5.25 SRP**

**41<sup>60</sup>**  
CASE



**26 QUART**  
**12 CT. CASE**  
46575  
**7.25 SRP**

**57<sup>66</sup>**  
CASE

## CHARCOAL LIGHTER FLUID

12/32 OZ.

4850835  
**5.85 SRP**

**46<sup>69</sup>**  
CASE



## DRANO LIQUID

32 OZ.  
3732572  
**4.27 SRP**

**3<sup>05</sup>**  
EACH



## TIDE TO GO STAIN ERASER

6 CT.

557606 **5.15 SRP**

**21<sup>18</sup>**  
BOX



ANTIFREEZE & COOLANT  
50/50

**6 CT. GALLON**  
70513 **9.59 SRP**

**38<sup>25</sup>**  
CASE



## MR. CLEAN LEMON

23 OZ.

149400 **5.68 SRP**

**4<sup>06</sup>**  
EACH



## OIL-DRI OIL ABSORBENT

30 LB. BAG

70399 **18.45 SRP**

**12<sup>72</sup>**  
BAG





# Beverages

Ask Your Falter Sales Rep for Details on Quantity Discount Specials!



**28<sup>99</sup>**  
CASE

**24 CT.**  
**20 OZ. BOTTLES**

- 440116 Grape
- 440109 Orange
- 440161 Pineapple
- 440160 Strawberry
- 440165 Berry

**2.15 SRP**



## COKE PRODUCTS

**24 CT.**  
**20 OZ. BOTTLES**

- 440108 Coke
- 440110 Diet Coke
- 44570 Cherry Coke
- 440115 Sprite
- 440118 Sprite Zero

**2.19 SRP**

**29<sup>99</sup>**  
CASE



## LIPTON PURE LEAF TEA

**12 CT. 18 OZ.**

- 44206 Extra Sweet
- 44404 Black Berry
- 44405 Peach Zero
- 44401 Lemon
- 44403 Raspberry
- 44400 Sweet
- 44402 Unsweet

**2.99**  
SRP

**24<sup>99</sup>**  
CASE



## STARBUCKS Frappuccino

chilled coffee drink

**12/13.7 OZ.**

- 599314 Coffee
- 599315 Mocha
- 599316 Vanilla
- 599317 Caramel

**41<sup>99</sup>**  
CASE

**5.09 SRP**



## Red Bull



**24 CT. 8.4 OZ.**

- 44189 Original
- 44182 Blueberry
- 44197 Yellow

**24 CT. 8.25 OZ.**

- 44187 Sugar Free

**2.85 SRP**

**41<sup>99</sup>**  
CASE



## Tropicana JUICES

**32 OZ.**  
**12 CT.**

- 44040 Apple
- 44065 Cranberry Juice Cocktail
- 20694 Orange

**5.09 SRP**

**35<sup>95</sup>**  
CASE



## Tropicana JUICES

**15.2 OZ.**  
**12 CT.**

- 43870 Apple
- 43862 Cranberry Cocktail
- 43845 Grape
- 43850 Orange
- 43849 Orange Pineapple
- 43875 Ruby Red Grapefruit

**3.48**  
SRP

**Bonus Buy**  
**20<sup>95</sup>**  
CASE



## Tropicana JUICES

**10 OZ.**  
**24 CT.**

- 43780 Apple
- 43821 Cranberry
- 20694 Orange Blend

**1.89 SRP**

**Bonus Buy**  
**24<sup>99</sup>**  
CASE



**100% JUICE**

**12 CT. 14 OZ.**

- 166459 Orange Juice

**3.59 SRP**

- 166497 Apple Juice

**2.89 SRP**

- 166671 Orange Mango Juice

**3.19 SRP**

**25<sup>29</sup>**  
CASE

**19<sup>95</sup>**  
CASE

**21<sup>49</sup>**  
CASE



## SPLASH

**12 CT. 14 OZ.**

- 166510 Fruit
- 166596 Cranberry
- 166664 Kiwi Berry
- 166695 Pink Grapefruit
- 166701 Concord Grape
- 166480 Lemonade

**2.89 SRP**

**19<sup>95</sup>**  
CASE



## JOE TEA



**12 CT. 20 OZ.**

- 44605 Blueberry Lemonade
- 44611 Green Tea
- 44604 Half & Half
- 44608 Kiwi Strawberry Lemonade
- 44601 Mango Lemonade
- 44602 Peach Tea
- 44603 Sweet Tea
- 44613 Lemonade
- 44615 Raspberry Tea
- 44612 Strawberry Lemonade

**2.95 SRP**

**18<sup>95</sup>**  
CASE





# Paper Goods • Food Service



ON-LINE ORDERING  
Now Available!  
Call Customer Service  
for Details!



## CLEAR CUPS & LIDS

864379	16 Oz. Clear Cup	1000/Cs	<b>64.99</b>
864380	20 Oz. Clear Cup	1000/Cs	<b>75.99</b>
864383	32 Oz. Clear Cup	500/Cs	<b>65.99</b>
864381	Flat Straw Slot Lid	1000/Cs	<b>27.99</b>

## PURE BRIGHT GERMICIDAL BLEACH

32 OZ. BOTTLE  
604034  
2.91 SRP

**1.79**  
EACH



## VALAY XPRESSNAP NAPKINS

6000 CT. CASE  
50558

**49.99**  
CASE



## SPOON STRAWS FOR SLUSHIES

300 CT. BOX  
74602

**5.29**  
BOX



## NAPKINS BEVERAGE

4000 / CASE  
50547

**21.99**  
CASE



## DOME LID for SLUSHY CUPS

1.9" HOLE  
1000 CT. 65230

**70.99**  
CASE



## TENDER SOFT BATH TISSUE

2 PLY - 4 PK  
6923 2.39 SRP

**1.69**  
PK



## ICE BAGS 10# DRAWSTRING ICE BAG

500 CT. CASE  
51076



**77.99**  
CASE

## 8# PRINTED ICE BAGS

1000 CT. CASE  
51065



**69.99**  
CASE



## TENDER SOFT PAPER TOWELS

15 CT. BUNDLE  
6907

**16.99**  
BND



## OVEN & GRILL CLEANER

GALLON BOTTLE  
54012

**7.99**  
EACH



# Paper Goods • Food Service



## REGULAR BAGS at LOW PRICES!



2 LB.	500 CT.	50720	8.99
4 LB.	500 CT.	50760	10.99
5 LB.	500 CT.	50780	13.99
6 LB.	500 CT.	50800	14.99
8 LB.	500 CT.	50820	17.99
12 LB.	500 CT.	50860	22.99

## EXTRA HEAVY DUTY BAGS

12 LB. HEAVY	400 CT.	50960	20.99
20 LB. SHORT BEER	300 CT.	51001	51.99
25 LB. SHORT BEER	300 CT.	51011	43.99

**PLENTY  
PAPER TOWELS**  
12 CT. BUNDLE  
7003418



**17<sup>99</sup>  
BDL**

**HEAVENLY SOFT  
BATHROOM TISSUE**  
2 PLY - 4 PACK  
50652  
2.39 SRP



**1<sup>59</sup>  
PACK**

**BLACK PLASTIC 1/10  
HANDLE BAGS**  
1000 CT. CASE  
51096



**11<sup>99</sup>  
CASE**

**55 GALLON  
EXTRA EXTRA HEAVY DUTY  
BLACK CAN LINERS**  
100 CT. CASE  
58019



**47<sup>99</sup>  
CASE**

## HOT PACK CLEAR COLD CUPS



57407	12 Oz. Cup	1000/Cs	62.99
52183	16 Oz. Cup	1000/Cs	65.99
57418	20 Oz. Cup	1000/Cs	77.99
56163	Flat Lid 12-20 Oz.	1000/Cs	35.99

**BLUE  
WINDSHIELD  
TOWELS**  
4008 CT. CASE  
50590



**54<sup>99</sup>  
CASE**

**PLASTIC  
PARTY  
BOMBER CUPS**  
25 CT. PACK 8110905 5.99 SRP



**4<sup>19</sup>  
EACH**

**WAXED  
DELI PAPER**  
15" x 10<sup>3/4</sup>"  
500 CT. BOX  
50450



**10<sup>99</sup>  
BOX**



# Tobacco & Cigars

Applicable "STATE" OTP Taxes Included Except Where Noted!

**ON-LINE ORDERING**  
Now Available!  
Call Customer Service for Details!

## **BIC** VACATION LIGHTERS

50 CT. TRAY  
8055

**SPECIAL PRICE!**

**63<sup>00</sup>**  
TRAY



## **BIC** **NEW!** HIGH STANDARDS

50 CT. TRAY  
8563

**SPECIAL PRICE!**

**63<sup>00</sup>**  
TRAY



## **BIC** LIGHTERS

**REGULAR**  
50 CT. TRAY  
2513

**51<sup>00</sup>**  
TRAY



**MINI**  
50 CT. TRAY  
2514

**45<sup>50</sup>**  
TRAY



## **BIC** LIGHTERS



**SPECIAL PRICE!**

**63<sup>00</sup>**  
TRAY

**WHIMSICAL**  
50 CT. TRAY 7961

## **BIC** LIGHTERS

**BX7**  
LIGHTERS  
40 CT. TRAY  
7506

**SPECIAL PRICE!**

**21<sup>50</sup>**  
TRAY



## **BIC** READY for SUMMER to BEGIN!

### MULTI-PURPOSE LIGHTERS

10 CT. TRAY DISPLAY  
2786

**SPECIAL PRICE!**

**31<sup>50</sup>**  
TRAY



**FLAVORED TOBACCO ITEMS NOT AVAILABLE IN D.C.**

# Tobacco & Cigars

Applicable "STATE" OTP Taxes Included Except Where Noted!



## WILDHORSE CIGARETTES

- 107 Gold Box Kings
- 127 Gold Box 100's
- 121 Green Box Kings
- 129 Green Box 100's
- 130 Menthol Silver 100's
- 123 Red Box 100's
- 106 Red Box Kings
- 128 Silver Box 100's



NOW!

**5<sup>00</sup> OFF**

## WILDHORSE PREMIUM PIPE TOBACCO

PLUS! Save an Extra **.50 Per Bag**

### 6 OZ. BAG

- 3960 Regular
- 3961 Smooth
- 3962 Menthol

EXTRA SAVINGS

**5<sup>60</sup> +OTP**



PLUS! Save an Extra **1.00 Per Bag**

### 16 OZ. BAG

- 3965 Regular
- 3966 Smooth
- 3967 Menthol

**12<sup>80</sup> +OTP**



NEW!

at FALTER!

## STEADY JET MINI BUTANE GAS TORCH LIGHTER

**MINI BUTANE GAS TORCH LIGHTER...TURBO!!**  
Just in Time for End of Summer and Fall Fun!

**12 CT. DISPLAY** with Torches Available in 4 Fun Colors, Adjustable Flame, Durable Metal Wick with Cap and Chain



SPECIAL PRICE!

**37<sup>50</sup> DISP**

## ZEN TUBES 250 CT.



- 5542 Full Flavor 84mm
- 5543 White 84mm
- 5546 Menthol 84mm
- 5544 Full Flavor 100mm
- 5545 White 100mm
- 5547 Menthol 100mm



## CIGARETTE PAPERS

2870



BUY 1 at **42<sup>28</sup>**

BUY 2 at **42<sup>08</sup>**

BUY 3 at **41<sup>78</sup>**

MD PRICES ONLY

ALL OTHER STATES

BUY 1 at **26<sup>71</sup>**

BUY 2 at **26<sup>51</sup>**

BUY 3 at **26<sup>21</sup>**

## Blunteffects®

## INCENSE 11" DISPLAY 72/12 PK

8517

NEW!



FLAVORED TOBACCO ITEMS NOT AVAILABLE IN D.C.



# Tobacco & Cigars

Applicable "STATE" OTP Taxes Included Except Where Noted!

## \*\*\* Swedish Match \*\*\*

# ZYN<sup>®</sup>

**NICOTINE POUCHES**

**THE #1  
NICOTINE POUCH  
in the UNITED STATES!**

# ZYN ULTRA

**20 Pouches Per Can**



- 8534 9MG Wintergreen Blast
- 8535 9MG Fresh Spearmint
- 8536 9MG Menthol Ice
- 8537 9MG Peppermint Frost
- 8538 9MG Signature Smooth
- 8540 9MG Chill Mist
- 8541 9MG Arctic Mint
- 8542 9MG Citrus Mist



**11MG STRENGTH  
COMING SOON!**

- 6500 3MG Cool Mint
- 6510 6MG Cool Mint
- 6501 3MG Peppermint
- 6511 6MG Peppermint
- 6503 3MG Wintergreen
- 6513 6MG Wintergreen
- 6502 3MG Spearmint
- 6512 6MG Spearmint
- 6504 3MG Coffee
- 6514 6MG Coffee
- 6505 3MG Cinnamon
- 6515 6MG Cinnamon
- 6506 3MG Citrus
- 6516 6MG Citrus
- 6507 3MG Smooth
- 6517 6MG Smooth
- 5346 Menthol 6MG NT
- 5345 Menthol 3 MG NT
- 5344 Chill 6 MG NT
- 5343 Chill 3 MG NT



## ZYN EXPANSION

- 8528 3MG Black Cherry
- 8529 6MG Black Cherry
- 8530 3MG Dragonberry
- 8531 6MG Dragonberry
- 8532 3MG Peach
- 8533 6MG Peach

## LIMITED TIME CIGAR OFFERINGS FROM

### \*\*\* Swedish Match \*\*\*



# MOUNTAIN BERRY

**2/\$1.19** 8491  
**NP** 8492



# EMERALD SWEETS

**2/\$2.19** 8493  
**NP** 8494



**FLAVORED TOBACCO ITEMS NOT AVAILABLE IN D.C.**



# Tobacco & Cigars

Applicable "STATE" OTP Taxes  
Included Except Where Noted!



## Cheyenne

### BIG CIGARS

**FILTERED 100's • 10/20 PACKS**

- 3337 Tropical
- 3345 Wild Cherry
- 3340 Full Flavor
- 3344 Menthol
- 3339 Sweet
- 3346 Xotic Berry
- 3341 Xtreme Menthol
- 3347 Peach
- 3342 Classic (Light)
- 3348 Vanilla
- 3343 Grape
- 3338 Strawberry



**6 OZ.**

- 5640 Classic
- 5641 Light
- 5642 Menthol



**16 OZ.**

- 5650 Classic
- 5651 Light
- 5652 Menthol



## DERRINGER

### CIGARS 10/20 PACKS

- 3951 Full Flavor
- 3952 Menthol
- 3953 Classic
- 3955 Vanilla



## LEAF WRAPS

**18 CT.**

- 2987 Original
- 2999 Rum
- 5664 Cognac



**FLAVORED TOBACCO ITEMS NOT AVAILABLE IN D.C.**



3501 Benson Avenue • Baltimore, MD 21227  
**(410) 644-6414**

After Hr. Answering Service FAX (410) 646-3745

1 (800) 322-3491 (In Maryland) [www.georgejfalter.com](http://www.georgejfalter.com)

Under 21  
No Tobacco  
No Vapor

**We  
Card**

# Bonus Buys

**Bonus Buy**  
**PAGE 2**

**Bonus Buy**  
**PAGE 2**

**Bonus Buy**  
**PAGE 2**

**Bonus Buy**  
**PAGE 6**

**Bonus Buy**  
**7PAGE 7**

**Bonus Buy**  
**PAGE 7**

**Bonus Buy**  
**9PAGE 7**

**Bonus Buy**  
**9PAGE 7**

**Bonus Buy**  
**7PAGE 17**

**Bonus Buy**  
**PAGE 18**

**Bonus Buy**  
**9PAGE 18**

**Bonus Buy**  
**9PAGE 19**

**Bonus Buy**  
**7PAGE 19**

**RETAILER CONTEST!**  
**SEE PAGE 10**

**RETAILER CONTEST!**  
**SEE PAGE 11**

## Check Out These **NEW!** Items!

**SEE PAGE 4**  
TWIGZ SOUR CREAM & ONION

**SEE PAGE 6**  
Chex mix with milk chocolate M&M'S SHAKE IT UP

**SEE PAGE 8**  
Essential Energy INSTANT LIGHT RIDGE CHARCOAL BRIOULETS

**SEE PAGE 6**  
TWIGZ CRAFT PRETZELS BUTTERY HERB & GARLIC

**SEE PAGE 6**  
Gushers

**SEE PAGE 18**  
TenderSoft Premium Bath Tissue

**SEE PAGE 18**  
TenderSoft Premium Bath Tissue 85

**SEE PAGE 20**  
BIC Lighters

**SEE PAGE 21**  
Blunt Effects

**SEE PAGE 22**  
ZYN ULTRA